



Springfield

Case Studies



FIND THE 6 TAPE MEASURES INSIDE TO RECEIVE 1 FREE TAPE MEASURE
Simply send the page numbers to dallas@springfieldsupplies.com along with your address.



01179 729 320 | springfieldsp.com

Contents

The Springfield Process	3
Your Table & Chair Height Guide	4
Meet the Team	5
Case Study: Leckhampton Gloucestershire	6
Case Study: Bespoke Discovery Centre	9
Case Study: Weybridge London	11
Case Study: Two Rivers Primary School	13
Case Study: QEH School	16
Case Study: Football Club	18
Case Study: Venturers Trust	21
Case Study: Weston College	24
Case Study: Norton Hill Primary School	27
Case Study: Newport School	30
Case Study: Frenchay Primary School	34
Accreditations	38
Reviews	39

The Springfield Process

Please contact us for Design Planning (including CAD service)
Remember, there are many products available
that are not shown in the catalogue!

1

Face To Face Design

Measure up and sketch. We take your ideas on board.



2

Concept Moves To Creation

Our CAD team can bring your ideas to life.



3

Project Specification

Endless choices!



4

Manufacture & Installation

Built to your requirements with quality components and materials for a long term solution.

Delivered with care at a time to suit you. Our skilled fitting team will handle your furniture with care.



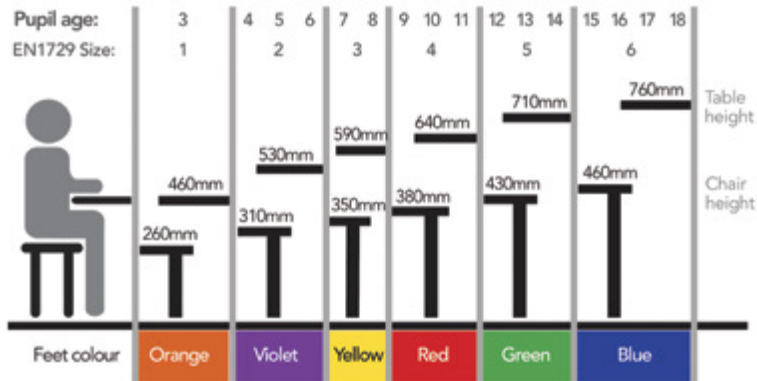
5

The Perfect Solution

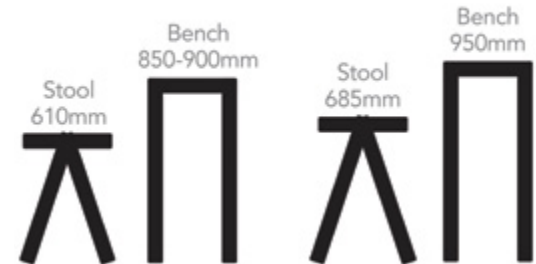
A truly great learning environment.

Your Table & Chair Height Guide

Choosing Tables and Chairs Recommended BS EN1729 heights



Not sure? Please ask for a sample chair or for a consultant to call & check your heights.



Need help?

Get in touch and one of our knowledgeable team will be happy to help. Carriage charges may apply depending on location.
01179 729 320 | info@springfieldsupplies.com

Meet the Team



Brian Baker
Managing Director



Nick Jodrell
Operations &
Logistics Manager



Douglas Turner
Project Sales
Manager



Tim Higham
Project and Design
Sales Leader



Carmen Baker
Project and Design
Sales Team



John Baker
Design Director



Jerry Sidaway
Construction Sales
Manager



Dez Kirkman
Project Manager &
Technical Design
Leader



Jeremy Howard
Sales & Marketing
Team



David Lyon
Sales & Marketing
Team



Matthew Coombe
Business Development
Leader



Sarah Trim
Accounts Dept
Leader/Sales Ledger



Karen Trim
Accounts Team/
Purchase Ledger



**Aneeshwa Sri
Sriramoju**
BIM Technologist



Dallas Baker
Fastrack Furniture
Sales Manager



Aishwarya Roy
Project Sales / BIM
Technologist



Kyle Timbrell
Purchasing



Simon Baker
Finance/Director



Tom Bell
Warehouse/Fitting
Team



Rob Gardiner
Furniture Fitting Team
Leader



Paul Cashley
Furniture Fitter



Paul Bajada
Furniture Fitter



Reuben Young
Furniture Fitter



Darryl Hudd
Furniture Fitter

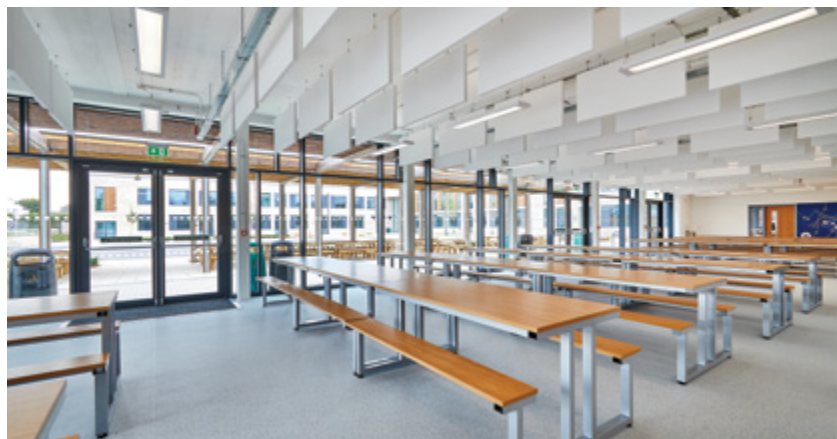


Tyler Bell
Furniture Fitter

New Secondary School Fit Out in Leckhampton Gloucestershire

Supplied through Kier Construction, this installation is a recent flagship school fitout.







Product Highlight
Changing Room Benching

Product Code
Y2SCRBCH



Product Highlight
Chevron Posture Chair

Product Code
Y1617

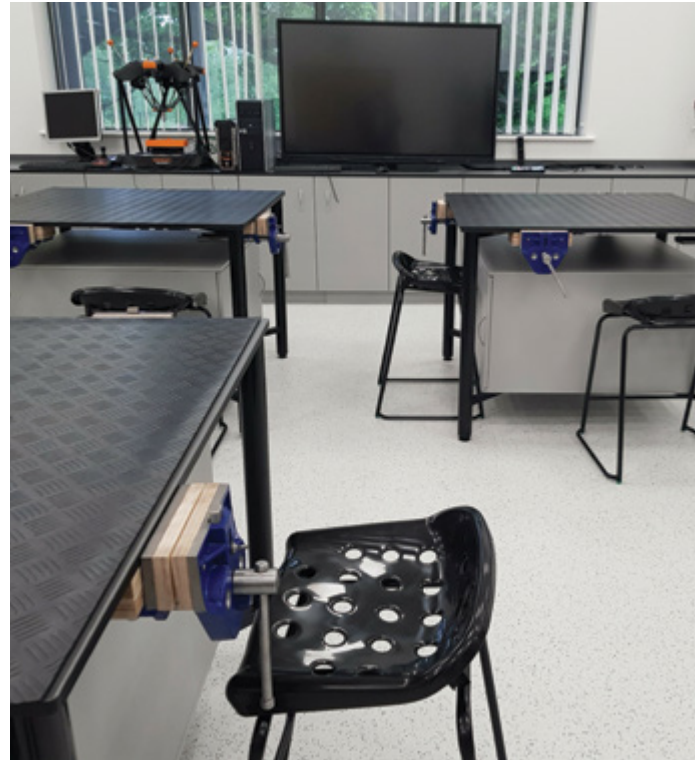


Check the Case Study video here!



Bespoke Discovery Centre

Springfield installed a flexible new “discovery centre” for a recent client – the end result was designed for their usage, and suitable for a wide range of learning options.





Product Highlight	Product Code
Construction Work Bench	YDTT03-03



Product Highlight	Product Code
Olympic Stool	Y19103

Bespoke Seating and Reception Desk - Weybridge, London



We worked with the client to finalise colours, heights and full details. The units were then built in our workshop in Bristol and installed by our carpentry team. The client is very pleased and the end result looks stunning, note the scribe around the tree trunk thanks to the carpentry team's eye for detail.





Two Rivers Primary School



Two Rivers Primary School is part of the Crest Nicholson's Hygge development in Keynsham. Springfield was proud to be included right from the beginning at design stage, 2 years before the school was built. We worked with the Contractor, Architect & the Headteacher to create a functional, attractive and inspiring environment for both the students & staff to work in. Using our BIM modelling facilities we produced numerous plans & 3D visuals to agree on the final design.





Product Highlight	Product Code
Fully Welded Classroom Table	Y15560



Product Highlight	Product Code
18 Shallow Tray Storage Unit	YDTT03-03



Product Highlight	Product Code
Mono Posture Chair	Y16517



Product Highlight	Product Code
Round Trumpet Dining Table	Y370136





Product Highlight

Stylo Round Stool - Fabric

Product Code

YSTYROF

Check the Case Study video here!



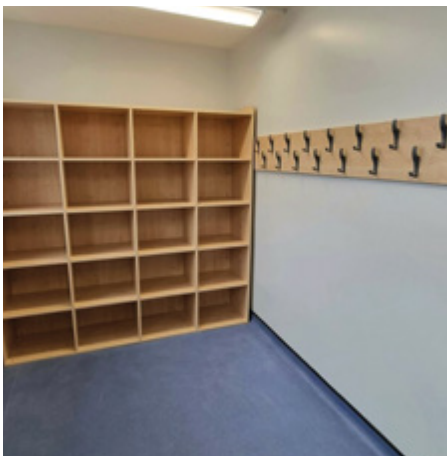
Free CAD design and planning service available

QEH School

Springfield completed a range of teaching spaces and bespoke storage ready for a fresh inspiring start for the students this term.

Light finishes and attention to detail resulted in a learning environment that is not only sympathetic to the historic school interior, but functional to the needs of the students also!





Product Highlight
20 Hooks with Rail

Product Code
320304



Product Highlight
16 Compartment Bag Storage

Product Code
Y200702



Product Highlight
Chime Mesh Operator Chair

Product Code
YCHI1B



Product Highlight
Compact Teacher's Desk

Product Code
Y126RTDY

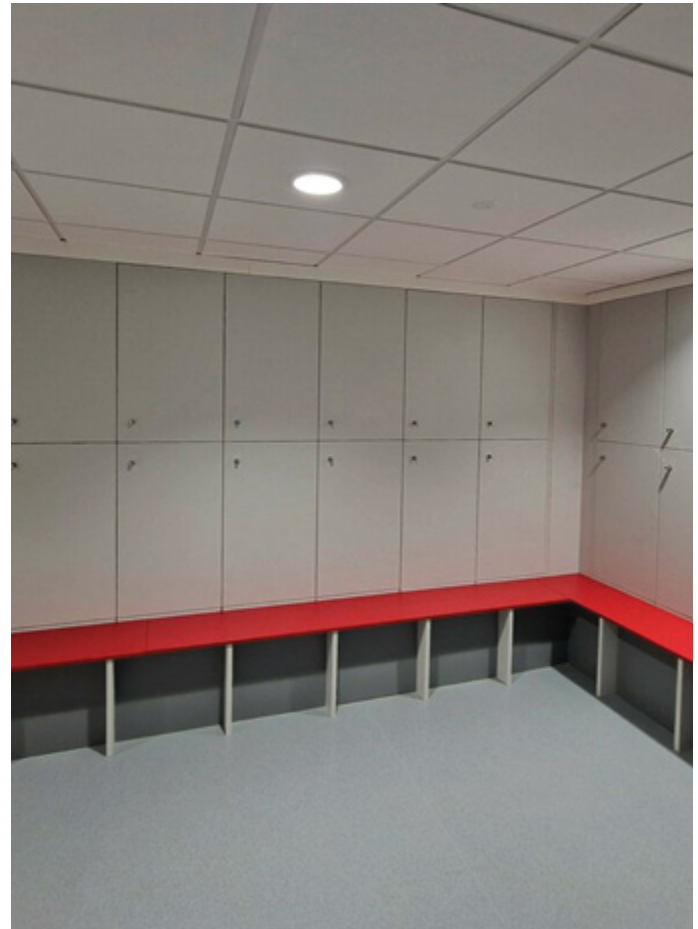
Bespoke Changing Room Fit-Out - Football Club



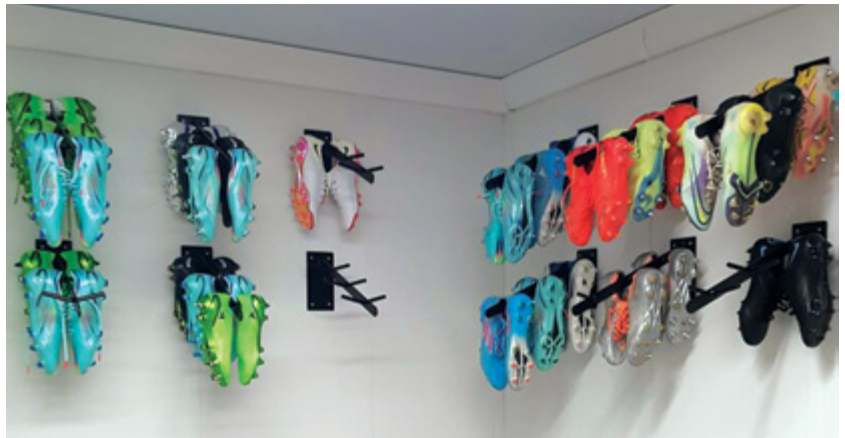
A real flagship project for Springfield was achieved with the design and installation of high-quality fixed furniture at a recent football club training centre.

Great finishes and thoughtful design detail resulted in a breath-taking scheme to cover a very varied range of specific spaces.





Free CAD design and planning service available



Venturers Trust

A new build school in Witherwood Bristol is a fully specified, brand new campus with a wide range of teaching spaces for all ages, plus supporting rooms.



With the use of strong colours and quality finishes Springfield supported the trust with a furniture installation that will look good for many years to come, giving the students the equipment they need to learn and grow in a spacious up to date environment!





Product Highlight
Mid Back Operator Chair

Product Code
Y20106



Product Highlight
Fully Welded Classroom Table

Product Code
Y15598



Product Highlight
Standard Filing Cabinets

Product Code
YSLV4M



Product Highlight
6 Bay Kinderbox

Product Code
Y17023





Product Highlight
Stylo Square Stool

Product Code
YSTYSQV



Check the Case Study video here!



Weston College



This was a full refurbishment project where we were pleased to be included in this process.

We were tasked with installing quality storage wall and kitchenette solutions in various rooms, using a hard-wearing lacquered Birch faced plywood construction, incorporating unique features such as smooth handle-less door designs.





Product Highlight Classic Classroom Poly Chair	Product Code Y16704
--	-------------------------------



Product Highlight Student Bean Bag	Product Code YSTUBB82
--	---------------------------------



Check the Case Study video here!



Norton Hill Primary School

A new build school providing 3 form entry from Nursery through to Year 6, catering for over 600 children.



It included specialist rooms such as Food Tech, STEM, Library. During this project we fitted all fitted & loose items including dispensers, climbing frames & Rope frames.





Product Highlight	Product Code
Fully Welded Classroom Table	Y15628A



Product Highlight	Product Code
3 Shelf Library Display Unit	Y15114



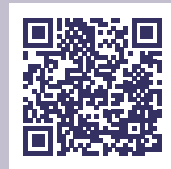
Product Highlight	Product Code
Bookcase	Y15193



Product Highlight	Product Code
Stylo Oval Stool	YSTYOVF



Check the Case Study video here!



Ysgol Gyfun Gwent Is Coed (Newport)



The goal was to create a stimulating and conducive environment that fosters creativity, innovation, and practical learning. This case study delves into the successful implementation of the project and its impact on both students and educators.

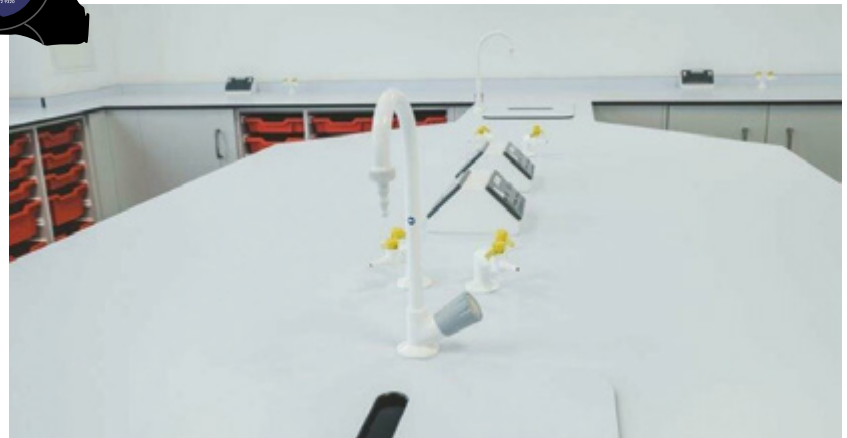




Product Highlight Student Lipped Stool	Product Code Y15014
--	-------------------------------



Product Highlight Supremeshelf Shelving System	Product Code YRK206012
--	----------------------------------





Product Highlight	Product Code
Mono Posture IT Chair	Y32011



Check the Case Study video here!



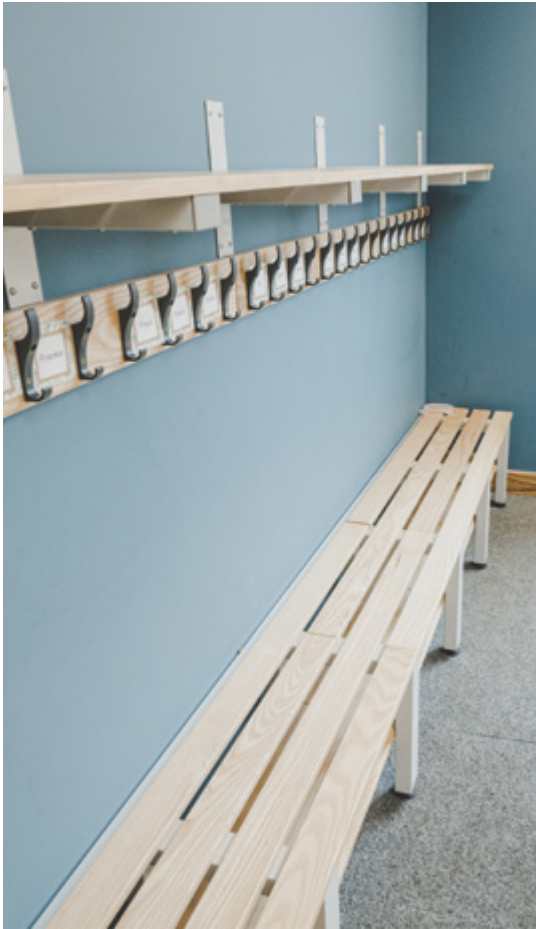
Frenchay Primary School

Project completed in Frenchay Bristol. Complete Primary School Fit-Out. Project went well, completed in time and a truly inspirational end result.





Free CAD design and planning service available





Product Highlight	Product Code
Mono Posture High Stool	Y100132



Product Highlight	Product Code
Fixed Changing Room Bench	YFCRBBS



Check the Case Study video here!



Accreditations



Reviews

MI ★★★★★

"The table delivery and install went perfectly yesterday, and I'd just like to take the opportunity to say a huge thank you to yourself and the team that worked on the table. It's a massive improvement on the one we had beforehand, and looks like it'll last for years and years to come.

I really appreciate all of your help, and the help of everyone involved. Please can you pass on my thanks to the contractors that did the delivery and install yesterday? I missed catching them just before they left as I got called away."

DEVIZES SCHOOL ★★★★★

"Just some feedback regarding your delivery drivers. They were absolutely brilliant today. The team said they have to be some of the nicest blokes/delivery drivers we have ever interacted with."

HOWELL CUMMINGS ★★★★★

"May I just take this opportunity to compliment your level of service please, your customer care has been amazing, you've kept me informed every step of the way; yourself and your colleagues have made what is usually an absolute nightmare, a stressless and pleasant process and it's very much appreciated.

Thank you again and we will definitely keep in touch for any future requirements."

SCHOOL IN NEWBURY ★★★★★

"I wanted to say a huge thank you for your amazing help in getting everything ordered and on site. When I was given the project my first reaction was to hide under the desk, it just seemed like such a mammoth task, but the whole process has been absolutely flawless and this is completely down to you. "

NORTH HILL HOUSE SCHOOL ★★★★★ ASPRIS CHILDREN'S SERVICES

"Thank you to Rob and Paul who have been here at North Hill House this week delivering, building and preparing the teaching spaces. They were both extremely professional, approachable and flexible. They are certainly an asset to your team and company. Thank you again for all the work Rob and Paul put in to preparing the classrooms and to the rest of the team making sure all of this happened on time."



Springfield



BRISTOL OFFICE Old Gloucester Road, Knap, Thornbury, Bristol, BS35 3UF

WALES OFFICE Beacon House, Queensway, Swansea West Business Park, Swansea, SA5 4DH

CLERKENWELL - LONDON SHOWROOM Clerkenwell, London, EC1M 4NQ

MANCHESTER SHOWROOM Portland Street, Manchester, M1 3BE

